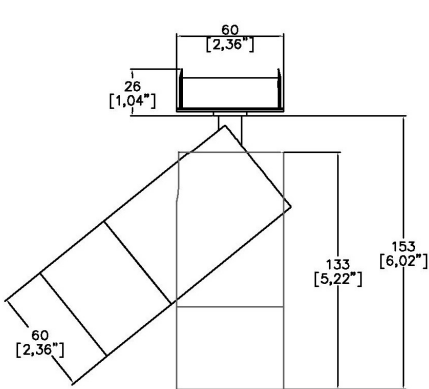


TubeLED Mini Ambiance WarmDim

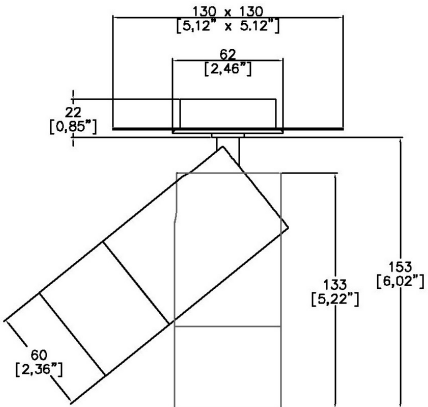
TM65.2	13kgCO2e
TM66	2.2 CEAM



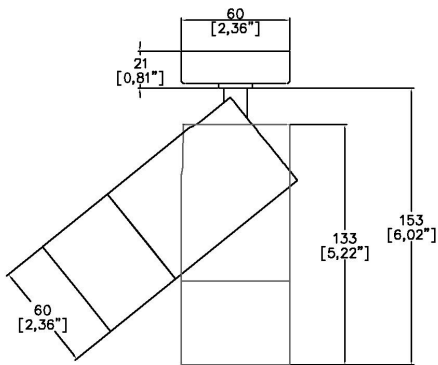
60mm (2.36”) overall diameter. LED spotlight with remote driver. Available with monopoint mounting. Family of matching products also available.



7100WD-LED-RMP  
Cut out Ø57mm



7100WD-LED-TMP  
Cut out Ø57mm



7100WD-LED-SMP  
Cut out Ø15mm

LED Source	LEDWD	LEDWD
CCT range	3000K	3000K
Drive Current (max per channel)	500mA	500mA
Power inc Driver Max	17.1W	17.1W
Beam Angle	28°	39°
Delivered Lumens	678	767
Delivered Intensisty cd	2984	1998
Efficacy lm/w	40	45
Forward Volt (max per channel)	29.1V	29.1V
CRI	≥95 CRI	≥95 CRI

Apply these factors to 3000K for lumen output of other CCTs: 2700K x 0.93.

Project Ref: \_\_\_\_\_

Location Ref: \_\_\_\_\_

Fixture Order Code: **7100WD-LED** -  -  -  -  -  -

Fixture  
7100WD-LED      TubeLED Mini Ambiance WarmDim

CCT  
2720      2700K - 2000K  
3020      3000K - 2000K

Beam  
28      28°  
39      39°

Protocol  
P      Phase  
A      Analogue  
D      DALI  
B      Bluetooth\*\*\*

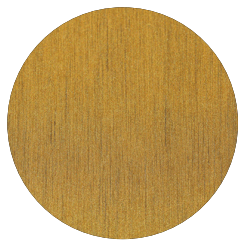
Colour Insert  
SN      Satin Nickel  
SG      Satin Gold  
CP      Copper  
BZ      Bronze  
(Blank)      Not required standard black to be supplied

Finish  
WH      White  
BK      Black  
RAL      Custom RAL Finish\*  
ABR1      Antique Brass  
ABZ1      Antique Bronze

Fixing  
RMP      Recessed Monopoint  
TMP      Trimless Monopoint  
SMP      Surface Monopoint

TubeLED Monopoint luminaires utilise remote drivers.

Finish selection

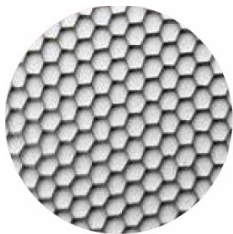


Antique Brass

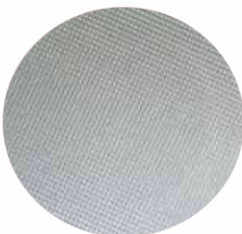


Antique Bronze

Accessories



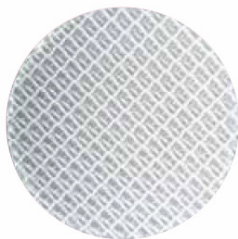
Honeycomb Louvre



Diffusing Lens



Frosted Lens



Heavy Spread Lens



Linear Spread Lens

Accessories Order Code:

- Louvre/Lens
- LL45 Honeycomb Louvre
  - LLCC Warm Tone Lens
  - LLUV UV Lens
  - LLDF Diffusing Lens
  - LLFR Frosted Lens
  - LLLS Linear Spread Lens
  - LLHS Heavy Spread Lens

## Technical Details

\*Custom RAL code must be specified. Custom RAL colours can increase prices and lead times

Dimming. Whilst Lucent can offer the majority of its luminaires with various dimming options, it remains the responsibility of the specifier/installer to check and ensure compatibility of any control equipment used. Additional cabling may be required depending on the dimming protocol specified.

\*\*Bluetooth (wireless) is the communication method. The exact dimming protocol must be confirmed to allow the selection of suitable drivers or bluetooth devices.

^ Depth indicated is the minimum recess depth for the luminaire with a remote mounted LED driver. Installing a driver through either the luminaire cut-out or installation kit may require additional recess depth, please refer to the relevant luminaire installation instructions for further details. Data correct at time of publishing

First Fix Requirement. Luminaire comprised of fixture body with ceiling trim and installation kit, which is to be fitted into the ceiling once finished. Ensure correct alignment of the installation kit before final assembly (see luminaire installation instructions for details)

IP Rating. Tested from underside of the ceiling

Note that the picture of the finishes provided is for illustrative purposes only. The finishes may vary in colour, texture and appearance. Contact Lucent lighting Ltd for more information.

It is the policy of Lucent Lighting to continually review and improve its products and therefore reserve the right to change any details of product or withdraw specifications without prior notice.

Luminaires designed to comply with EN60598 and all other standards.

This specification sheet supersedes all previous versions.

All intellectual property rights pertaining to the product described above and to this document are owned by or licensed to Lucent Lighting Ltd.

We reserve the right to take whatever action is necessary to protect those intellectual property rights.

Please notify Lucent Lighting Ltd of any inaccuracies immediately. E&OE